

S300

High Pressure Over Pressure Slam Shut Nominal Diameter ¾" & 1"



Applications

- LPG tank installations
- LPG networks

Brief information

Operation: The S300 utilises the familiar Jeavons Universal Safety Shut-off Assembly (USSA). This provides over pressure protection with immediate shut-off. It uses well proven principles to give exceptional consistency of operation and an unrivalled insensitivity to nuisance tripping. When the pressure increases above a predetermined value the trigger mechanism actuates and the valve shuts off the gas supply. Resetting can only be achieved manually.

Application: The S300 in-line over pressure slam shut (OPSS) protects gas installations, especially polyethylene pipework, from dangerous overpressure conditions and can be fitted either before or after the first stage regulator (see over the page for installation diagrams). Versions are available with either internal or external impulse. The S300 can be used with natural, liquid petroleum and manufactured gases and can be mounted in any orientation.

Control: A comprehensive range of springs is available, as described overleaf. The trip pressure can be easily and accurately adjusted by turning the spring adjuster.

Technical Data:

Maximum inlet pressure: 20 bar (290 psig)
For all high pressure units and externally
impulsed low pressure units.

Maximum inlet pressure: 2 Bar (29 PSIG)
For internally impulsed low pressure units.

Servicing: The S300 has been designed for ease of access, inspection and servicing of all internal components. A standard soft spares kit is available.

Low Pressure: Reference number SK3006-01

High Pressure: Reference number SK3006-02

Main features

- Size ¾" and 1"
- Temperature range
-20°C to +70°C
- Threaded connections to BS EN 10226
(ISO 7) or NPT (other threads may be
available upon request).
- External or internal impulse
- Spring loaded
- Simple manual reset
- In line maintenance
- Suitable for incorporation into systems
designed in accordance with Gas
Safety Regulations 1998 Section 14 (2)
- (4).
- Adjustable trip-off pressure gives a
wide range of set points
- Visual indicator

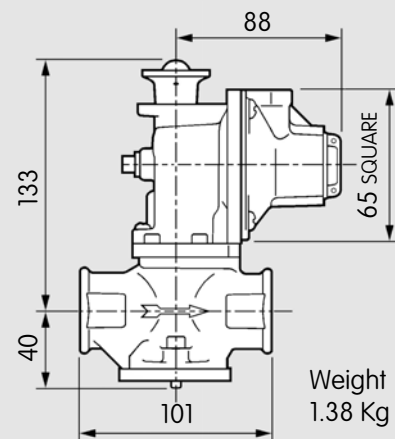
S300 HP Slam Shut Valve

Material Specifications

A summary of materials used for the S300 is given for reference. All material has been selected to provide maximum durability and reliability in service.

Components	Specification
Main Body	S.G. Iron BS EN 1563:1997 Gr 400-15
Valve Seat	Brass BS2874
Diaphragm	Nitrile Synthetic Rubber (Buna)
Valve Disc and "O" rings	Nitrile Synthetic Rubber (DIN 3535 Part 3)
Valve	Aluminium Alloy BS4300/5
Slam Shut Body and Cover	Aluminium Alloy BS1490
Internals	Acetal Resin
Springs	Carbon Steel, Zinc Plated and Passivated

Dimensions and Weights

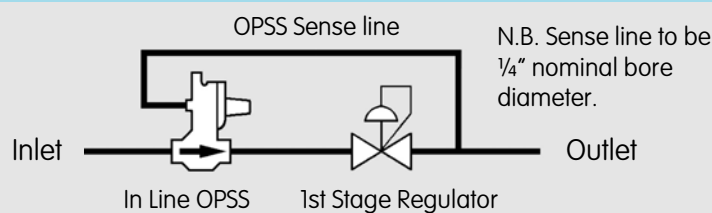


Loading Springs

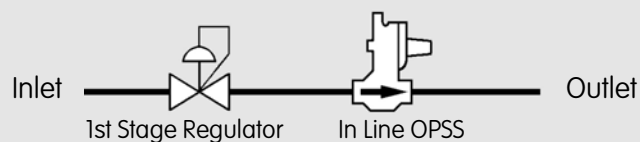
	mbar	"wg	Part Number	Colour Code
L.P.	18 - 60	7.5 - 24	J12506-281	Black
	50 - 80	20 - 32	J12506-282	Orange
	60 - 110	24 - 44	J12506-283	Red
	100 - 210	40 - 84	J12506-284	Dark Green
	200 - 350	3.0 - 5.0 PSI	J12506-287	Yellow
	280 - 500	4.0 - 7.0 PSI	J12506-288	White
H.P.	0.5 - 1.0 Bar	7.25 - 14.5 PSI	J12506-311	Dark Blue / Black
	1.0 - 2.0 Bar	14.5 - 29.0 PSI	J12506-312	Dark Blue / Orange
	2.0 - 4.0 Bar	29.0 - 58.0 PSI	J12506-313	Dark Blue / Red

Installation Piping Diagram

Option 1
In line OPSS fitted
UPSTREAM of first
Stage regulator



Option 2
In line OPSS fitted
DOWNSTREAM of first
Stage regulator



Contacts

United Kingdom
Elster-Instromet
4 Pate Road, Melton Mowbray
Leicestershire LE13 0RG
T +44 1664 567797
F +44 1664 410254
www.elster-instromet.com
sales@elster-instromet.co.uk

Germany
Elster GmbH
Steinern Str. 19 - 21
55252 Mainz-Kastel
T +49 6134 605 0
F +49 6134 605 223
www.elster-instromet.com
info@elster-instromet.com

USA
Elster American Meter
2221 Industrial Road
Nebraska City, NE 68410-6889
T +1 402 873 8200
F +1 402 873 7616
www.elster-meterservices.com

S3001EN02

A23.02.2009