

enSuite: Stay up to date!

New operating system versions and changing trends in computer hardware mean that it is necessary to make adjustments to PC software products at ever shorter intervals. If the technical basis can no longer meet the new requirements, the only option is to say goodbye to popular tools.

The declared aim for the development of the enSuite parameterization and analysis software was to use a single piece of software for all volume conversion devices, data loggers and flow computers. Originally, the devices in the gas-net series and the applications in the GPRS modems in LIS200 devices (for example, the EK280 and DL230) were supposed to be used with the familiar, time-tested WinPADS200 and GAS-WORKS PC programs until the end of their service lives.

However, the new requirements on these PC programs and the lengthy period of use of our robust metering products have led to us revising this decision and including the required parameterization and maintenance functions in the enSuite software.

In practical terms, this means for the volume conversion devices and data loggers in the LIS200 series that the ComTCPServ and ComFTP modem applications can now also be parameterized using enSuite (V3.9 or higher).

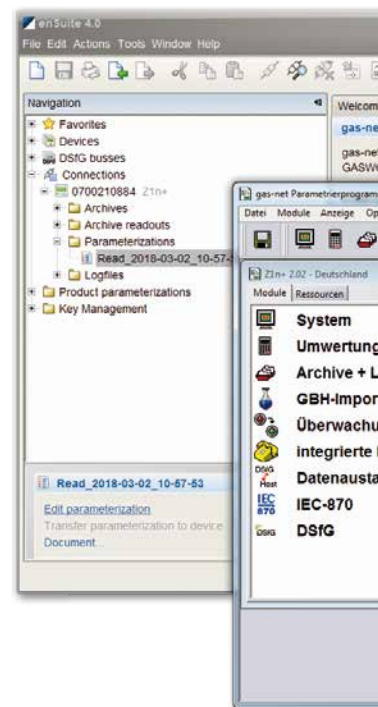
Functions for the maintenance of gas-net series devices have also been included in enSuite. We have deliberately omitted some functions from the GAS-WORKS software suite.

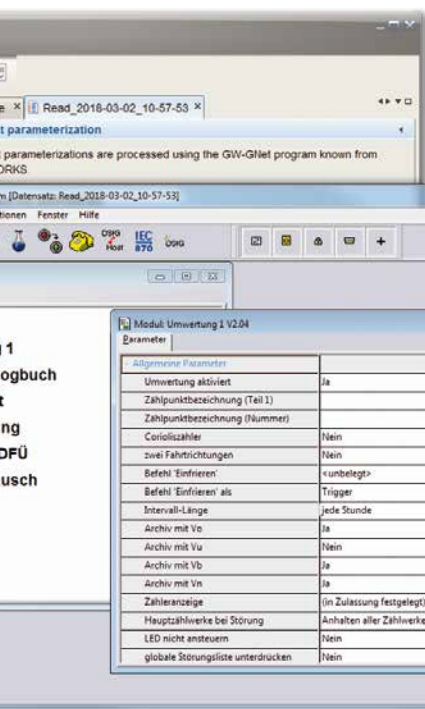
The following list shows which functions have already been included in the current version 4.0 and which will be available in the next version 4.1 which will be released in April 2018.

GAS-WORKS Functions in enSuite

Available in enSuite V4.0:

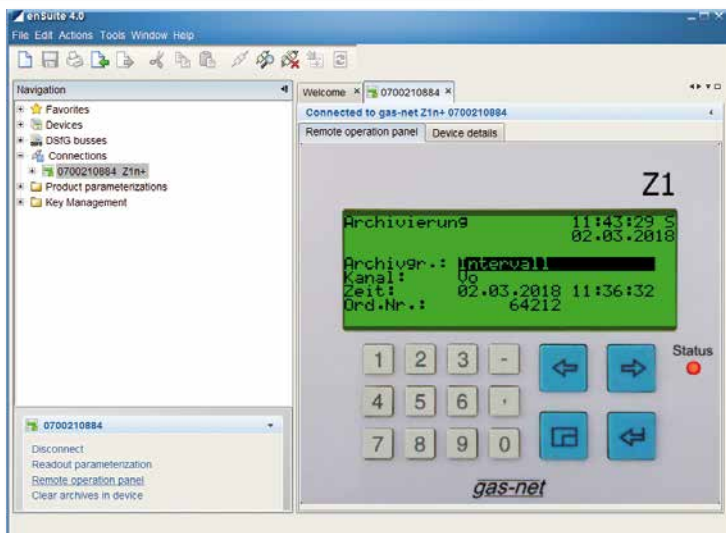
- Read and transfer parameter sets (local serial DSS interface)
- Delete archives (local serial DSS interface)
- Remote operation panel for gas-net devices (local serial DSS interface and DSfG via LAN interface)
- gas-net diagnostic function: Software versions, states, I/O configuration (local serial DSS interface and DSfG via LAN interface)
- Edit gas-net parameter sets (integration of GW-GNet)
- Import gas-net parameter sets from GAS-WORKS (GNP files)
- Import archive data (AGR files)
- Create data books for gas-net devices (identical templates as for GAS-WORKS)





Opening GW-Gnet in enSuite

Remote Operation Panel for gas-net Devices



Available as from enSuite V4.1:

- Data communication also via modem (analog, GSM) as a replacement for GW-Remote
- Set meters (local serial DSS connection)

The following functions will not be supported:

- Create a new parameter set (offline parameterization, save existing parameter set as a template)
- Online parameterization (edit individual parameters)
- Convert gas-net parameter sets
- Remote parameterization using DSfG
- Firmware update
- GW-Message functions

Nothing lasts forever! This particularly applies to software products. With this in mind, it is now finally time to say goodbye to the time-tested, popular WinPADS and GAS-WORKS. Look forward to the new functions in enSuite and give us your feedback.

Bernhard Thomas bernhard.thomas@honeywell.com